

# Handset Testing Guide

## Covering All Variants of the CP Lift Family

This document will guide you on how to test the handset to determine if the handset is functioning correctly. Follow the steps below to determine if the handset is functioning correctly.

Each of the below troubleshooting steps requires a multi-meter to test the continuity of the handset signals, testing the continuity of the connection pins will ensure that the signals from handset commands are received by the portable lift. Prepare the multi-meter by setting it to read continuity, the red lead (positive) should be plugged into the voltage port, and the black lead (negative) should be plugged into the COM port.



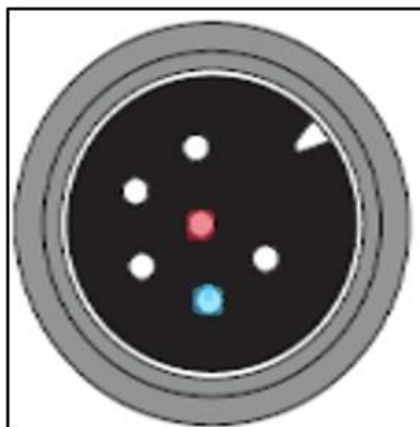
### **Step 1**

Remove the handset from the portable lift.

### **Step 2**

Test the continuity of the UP command to ensure that the signal is being delivered through the handset to the portable lift.

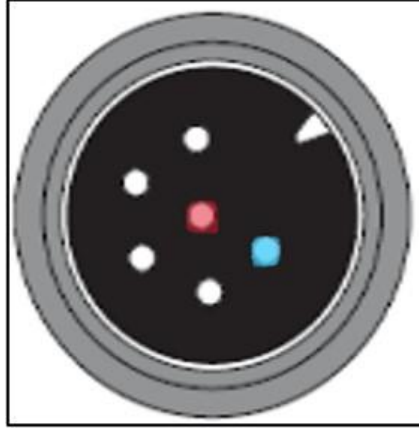
First press the up button to send the signal and touch the black (negative) lead onto the (blue coloured pin – see image), and the red (positive) lead onto the (red coloured pin – see image). The multi-meter will alarm a continuous beep if continuity is present. If there is no continuity, the handset is damaged and requires replacement.



### **Step 3**

Test the continuity of the DOWN command to ensure that the signal is being delivered through the handset to the portable lift.

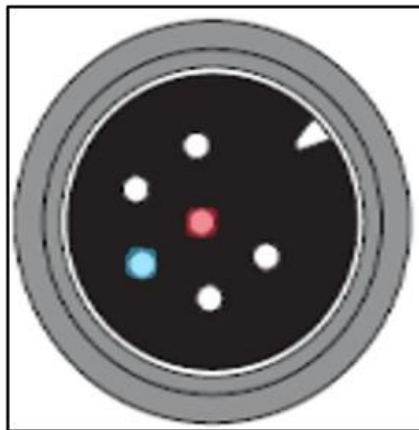
First press the down button to send the signal and touch the black (negative) lead onto the (blue coloured pin – see image), and the red (positive) lead onto the (red coloured pin – see image). The multi-meter will alarm a continuous beep if continuity is present. If there is no continuity, the handset is damaged and requires replacement.



### **Step 4**

Test the continuity of the E-LOWER command to ensure that the signal is being delivered through the handset to the portable lift.

First press the e-lower button to send the signal and touch the black (negative) lead onto the (blue coloured pin – see image), and the red (positive) lead onto the (red coloured pin – see image). The multi-meter will alarm a continuous beep if continuity is present. If there is no continuity, the handset is damaged and requires replacement.



### **Step 5**

If all three handset commands pass the continuity test, the handset functions correctly, if any commands do not show continuity, the handset is damaged and requires replacement.