

Battery Testing Guide

Covering All Transactive Xtra Models

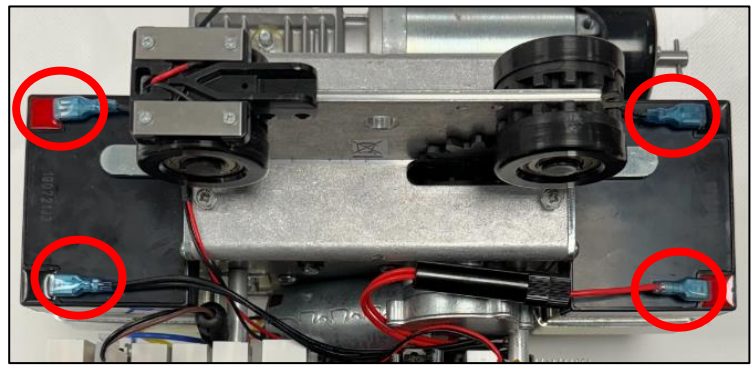
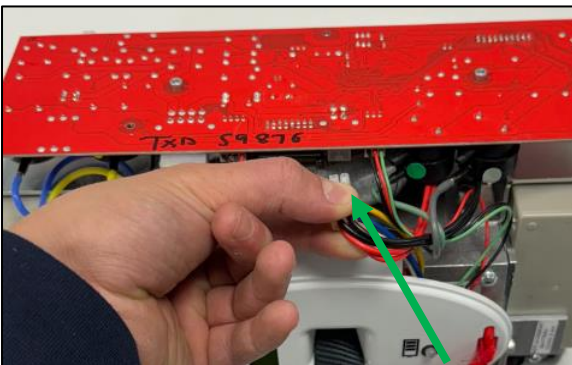
This document will guide you on how to test the batteries to ensure that they are providing the ceiling lift will the required power. Follow the steps below to determine if the batteries are functioning correctly.

Step 1

Access is required to test the batteries, for this, the ceiling lift covers will need to be removed, refer to the service manual for details on the correct removal procedure.

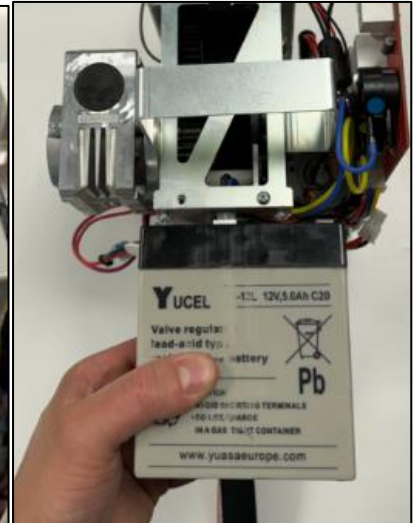
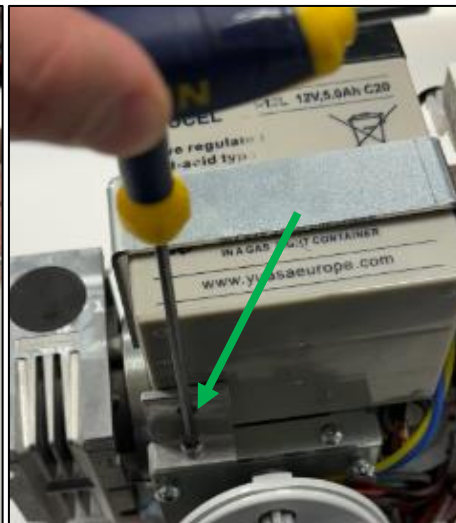
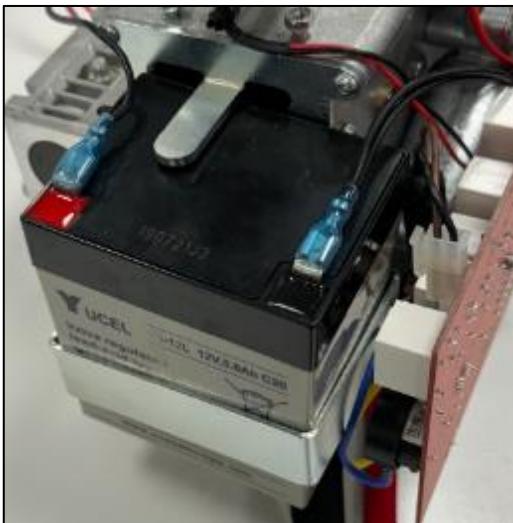
Step 2

Disconnect the batteries from the ceiling lift by disconnecting the battery connection leads, the first lead to disconnect is the power lead from the board.



Step 3

If you require better access to the batteries, remove both batteries from the ceiling lift by removing the plate that clamps the battery into place using a 3mm Allen key. Then slide the battery out the bottom of the ceiling lift



Step 4

An ACT battery tester is required, place the unit by the batteries ready for testing.



Step 5

Attach the red (positive) lead to the positive terminal on the battery, then attach the black (negative) lead to the negative terminal on the **same** battery.



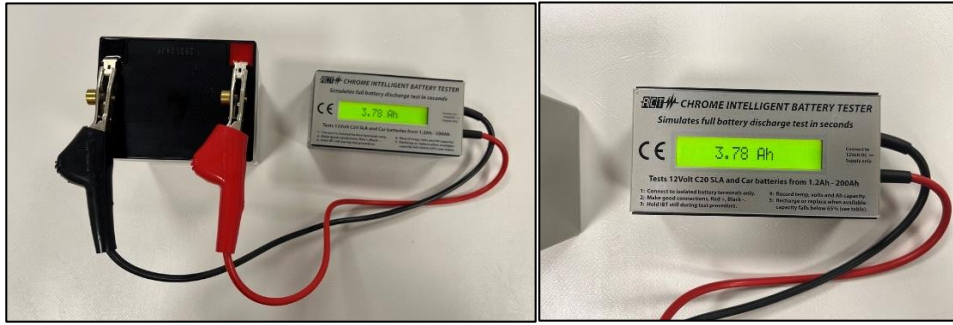
Step 6

The battery tester will display the recorded voltage measured across the two terminals. This must be between **12-13.5 volts**. If the voltage has dropped below 12v, the battery may require charging. If the batteries have been charged, then the battery is damaged and cannot hold charge. Battery replacement is required.



Step 7

The battery tester will also display the recorded ampere hour (Ah) measured across the two terminals; this must not drop below **3.0 Ah**. If the ampere hour has dropped below 3.0Ah, then the battery is damaged and must be replaced.



Step 8

Repeat **step 5, 6 and 7** for the other battery. The same procedure applies.

Test complete.

Disconnect the battery tester from the batteries and refit the batteries to the ceiling lift (or fit new batteries). Follow the service manual for correct assembly instructions if required.