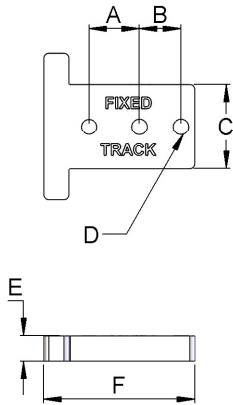
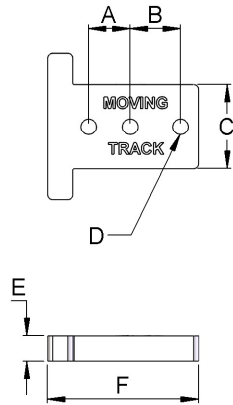


Transition Gate Drill Templates Data Sheet

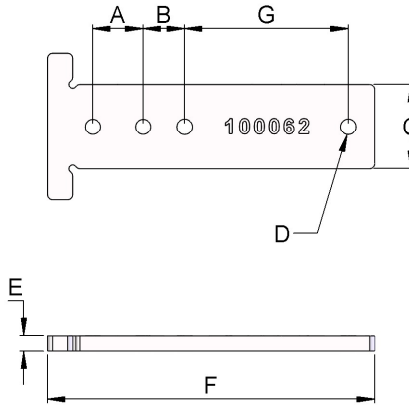
Transition Gate
Fixed Track Drill
Template (100017)



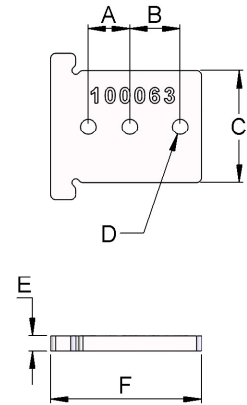
Transition Gate
Moving Track Drill
Template (100018)



Transition Gate Heavy
Duty Fixed Track Drill
Template (100062)



Transition Gate Heavy
Duty Moving Track Drill
Template (100063)



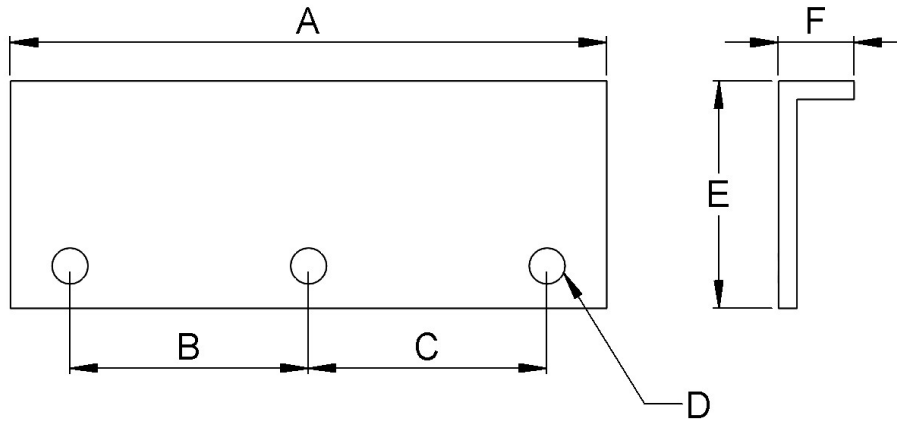
- Drill templates are required to correctly locate holes to install a transition gate.

Drill Templates Dimensions (mm/inches)				
Dimensions (Ref to drawing)	Transition Gate Fixed Track Drill Template	Transition Gate Moving Track Drill Template	Transition Gate Heavy Duty Fixed Track Drill Template	Transition Gate Heavy Duty Moving Track Drill Template
A	20mm (0.8")	16.5mm (0.65")	20mm (0.8")	16.5mm (0.65")
B	16.5mm (0.65")	20mm (0.8")	16.5mm (0.65")	20mm (0.8")
C	33.5mm (1.3")	33.5mm (1.3")	33.5mm (1.3")	44.5mm (1.8")
D	ø6.2mm (0.24")	ø6.2mm (0.24")	ø6.2mm (0.24")	ø6.2mm (0.24")
E	10mm (0.4")	10mm (0.4")	6mm (0.2")	6mm (0.2")
F	60mm (2.3")	60mm (2.3")	130mm (5.1")	60mm (2.3")
G	N/A	N/A	65mm (2.5")	N/A

Drill Template Use	
Variant	Used For
Transition Gate Fixed Track Drill Template (100017)	100054
Transition Gate Moving Track Drill Template (100018)	100054
Transition Gate Heavy Duty Fixed Track Drill Template (100062)	100070
Transition Gate Heavy Duty Moving Track Drill Template (100063)	100070

Transition Gate Drill Templates Data Sheet

Transition Gate Parallel Track
Drill Template (100019)



- Drill templates are required to correctly locate holes to install a transition gate.

Drill Templates Dimensions (mm/inches)	
Dimensions (Ref to drawing)	Transition Gate Parallel Track Drill Template (100019)
A	100mm (3.9")
B	40mm (1.6")
C	40mm (1.6")
D	ø6.2mm (0.24")
E	38mm (1.5")
F	13mm (0.5")

Drill Template Use	
Variant	Used For
Transition Gate Parallel Track Drill Template (100019)	100054 & 100070