

mackworth

# Easy Fit Portable Gantry



## Commissioning Manual

1	Introduction .....	3
2	Safety Precautions .....	3
3	Tools and Equipment List.....	3
4	Assembly .....	4
5	Accessories.....	9
6	Additional Documentation .....	9
7	Decommissioning .....	9
7.1	Dismantling.....	9
7.2	Disposal.....	9

## 1 Introduction

This manual will explain how to successfully commission the Mackworth Easy Fit Portable Gantry safely and effectively. This document includes how to assembly the gantry, as well as removing and decommissioning the gantry at the end of its life cycle. The aim of the manual is to advise and assist you, so that you can provide a successful install for the end user.

## 2 Safety Precautions

Read and understand this manual in its entirety before Commissioning the Mackworth Easy Fit Portable Gantry.

- Only Mackworth authorised personnel are eligible to perform a gantry commission and decommission.
- The gantry must not be in use by the user during any form of servicing.
- Ensure that all the procedures are followed correctly as instructed in this manual.
- All listed tools and equipment stated in this manual must be used to safely commission the gantry.
- Ensure you have assessed all risks for your environment and any persons within that environment before commencing work.
- Ensure you have all PPE available to carry out the work before commencing.
- The gantry is only suitable for installation within the professional and home healthcare environment.
- When working with gantries, ladders must be used for easier access. Ensure to follow safety guidelines while using ladders and working at height.

## 3 Tools and Equipment List

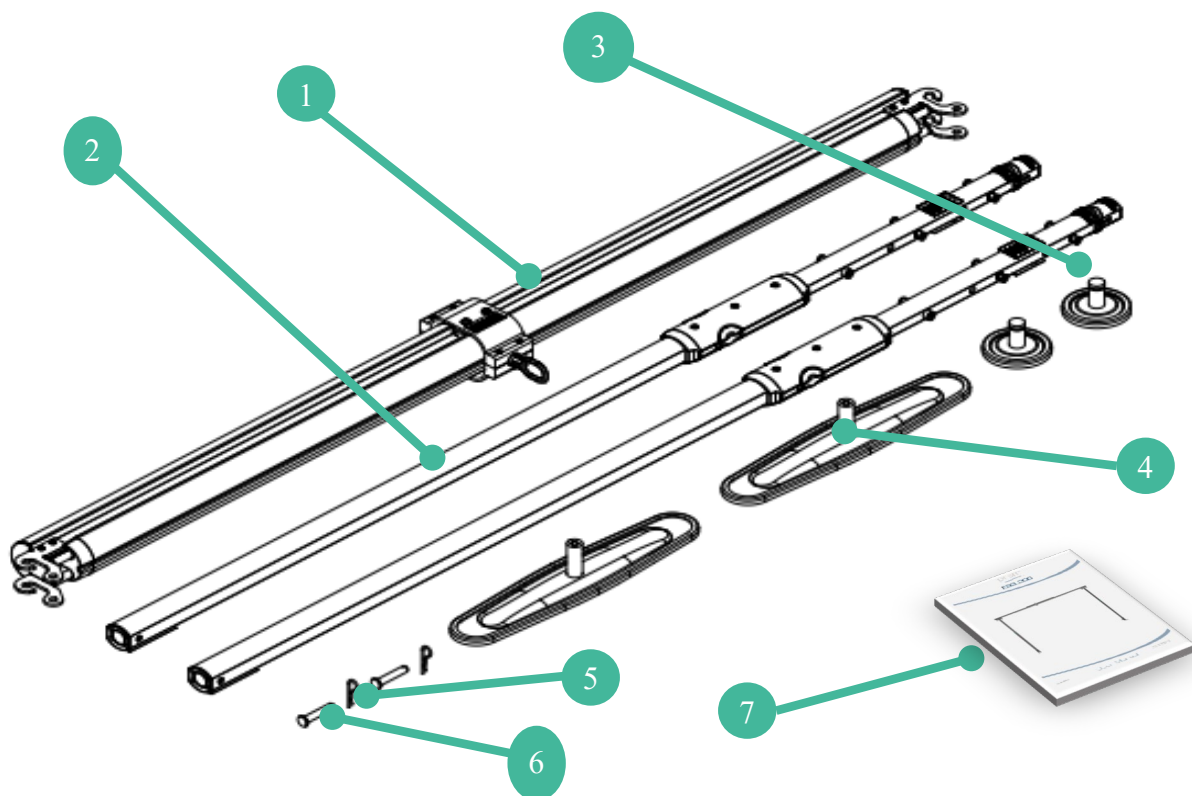
When carrying out work on the Mackworth Easy Fit Portable Gantry, you will require the following:

Tools Required	
Allen Keys - 2mm	2mm Slotted Screwdriver
Equipment and Lubricants Required	
Step Ladder Test Weights –Up to 1.5 x SWL Documentation (User, Service, Spare Parts, Commissioning Manual, Service Check List)	Cloth Marker Pen Tape Measure Digital Vernier

## 4 Assembly

This section will guide you on how to assemble and adjust the gantry. Prior to assembly, remove the components from the packaging, inspect the condition of each component and ensure that all components are available. See the list below for full component checklist. If any component is damaged, do not assemble the gantry and contact the local authorised dealer for replacement parts.

Item	Description	Product Code
1	Track Assembly	540153
2	Support Post	540154
3	Foot	540008
4	Ceiling Plate	540009
5	Post Pins	540116
6	Pin "R" Clips	000845
7	User Manual	999092



Follow the guidelines below for the correct assembly method, a two-person assembly is recommended.

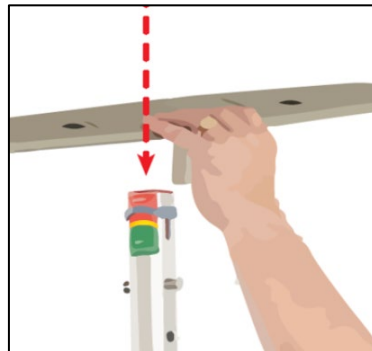
1. Place the circular bottom plates on the floor in the expected position of use



2. Insert the bottom of the support post to the bottom plate

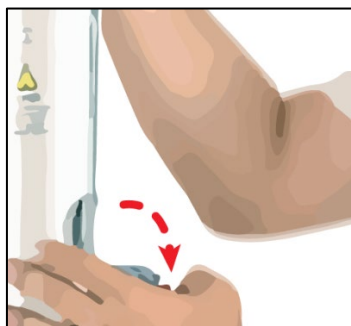


3. Insert the top plate onto the top of the support post

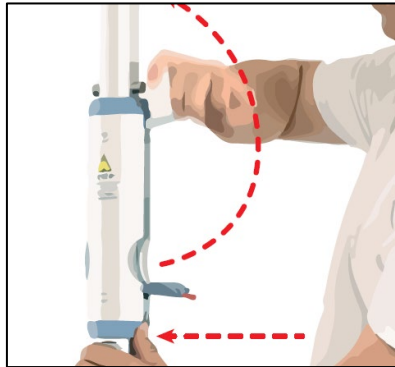


Please ensure both plates are located correctly at either end of the leg.

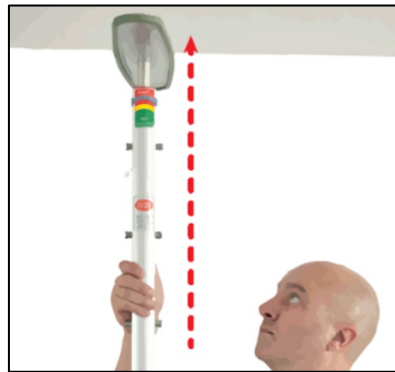
4. Depress the red latch and release the safety lock



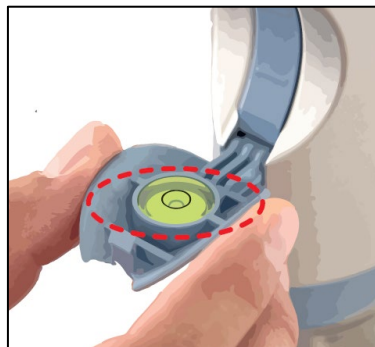
5. Depress the ratchet button to release the lever, then push the lever up until it meets the magnet symbol. Note: pushing down on the top part of the support post may help to release the lever.



6. Push the top part of the support post upwards until the top plate compresses against the ceiling. Push until you hear two clicks on the ratchet



7. Open the post level (opposite the safety lock) and check that the bubble is within the central circle by adjusting the position of the support post



8. Pull the lever down until it is flat to the support leg and click into place



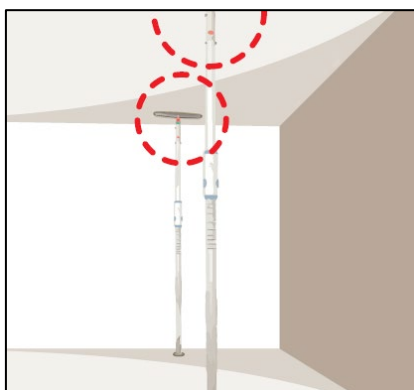
9. Check to ensure that the blue marker on the pressure gauge (located at the top of the support post) is comfortably in the green 'safe' zone on both sides. If it is not, it will be necessary to release the lever again and apply more than two clicks before closing it.



10. Push the safety lock back into place until it clicks and rotate the post to ensure that the lever is facing 90 degrees to the position of the second post.



11. Repeat the procedure to build the second support post and set it perpendicular to the first. Ensuring the second post is within 2.8m of the first installed post.

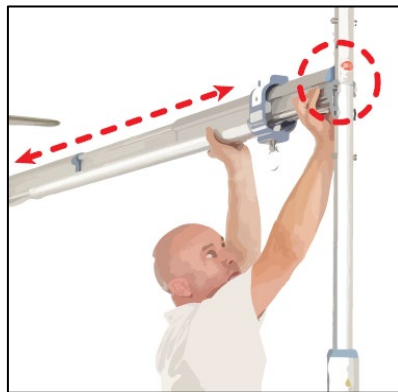


There shouldn't be any lateral movement once the legs have been installed.

12. Lift the track (you may need assistance from another person and steps to reach) and hook one end onto the support post pins.



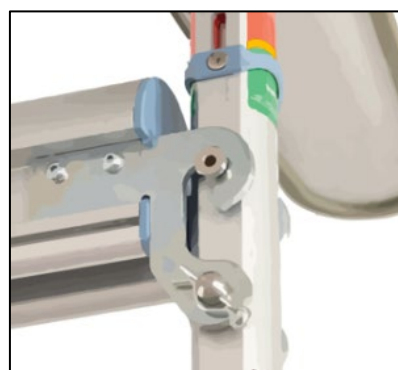
13. Extend or contract the track to fit between the two support posts and hook it on to the support post pins at the other side.



14. On either post, fit the safety pins by pushing them through the post and track as shown.



15. Install retaining clip through the end of the safety pin, to secure in place.





## 5 Accessories

The remaining parts provided include the User Manual and the box/packaging. These should be given to the customer for safe keeping. The box should also be kept with the user and stored in a safe place. The box will be required for decommissioning and transportation.

## 6 Additional Documentation

See the list of available documents you may or may not need to refer to for a successful service. All documents will be available to view on the Mackworth website: <http://mackworthusa.com>

- Spare Part Manual – 992092
- User Manual -999092
- Service Manual – 995092

## 7 Decommissioning

Once the gantry has reached the end of its life cycle, the gantry will require decommissioning. This includes dismantling and disposal. Follow the guidelines below for detailed instructions on how to decommission correctly.

It is highly recommended that the gantry be cleaned before decommissioning to reduce the risk of cross-contamination. For cleaning instructions, refer to the user manual.

For details on hoist removal, refer to the hoist commissioning manual.

### 7.1 Dismantling

All serviceable components of the gantry should be dismantled prior to disposal. Refer to the service manual for detailed instructions on how to dismantle the gantry, which will be similar to the assembly instructions found in this manual.

### 7.2 Disposal

The following specifies the importance of correct disposal procedures including local laws and being environmentally friendly.

Please observe the local laws on recycling and respect the current laws for disposal within the community where the device is being used. If you are uncertain about the guidelines below, contact your local authorities to determine the proper method of disposal of potentially biohazardous parts and accessories.

The relevant components utilised in the manufacture of the device that can be recycled at the end of life are:

Fully recyclables:
Easy Fit Track Assembly
Easy Fit Leg Posts x2
Easy Fit Feet x2
Initial packaging of the device (cardboard)
Metallic/Plastic fixing – Star Handles etc.

**Dealer/service contact details:**

**Contact details:**

Mackworth USA  
54 West Industrial Drive  
O'Fallon, MO 63366 USA  
314-889-1000  
[www.mackworthusa.com](http://www.mackworthusa.com)

**Disclaimer**

While every effort has been made to ensure the accuracy of information contained in this manual, no liability can be accepted by Mackworth for any errors or omissions. Mackworth operates a policy of continuous improvement. Specifications and other data are subject to change without notice.



54 West Industrial Drive  
O'Fallon, MO 63366 USA